

Order Form

Half Stone

Line 1: _____

Line 2: _____

Line 3: _____

Standard Stone

Line 1: _____

Line 2: _____

Line 3: _____

Line 4: _____

XL Stone

Line 1:

Line 2:

Line 3:

Line 4:

Line 5:

Line 6:

Sizes and Pricing

3 Lines
10 Characters Each

Half Stone 6 7/8" x 4 1/8" = \$100

4 Lines
13 Characters Each

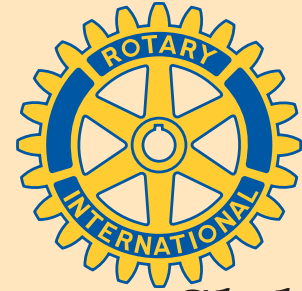
Standard 6 3/4" x 8 1/4" = \$250

6 Lines
16 Characters Each

XL Stone 8" x 12" = \$500

Special Thank You's To:

Knoppers Nursery
Rotary Club of Palatine Members
Unilock Pavers
Village of Palatine

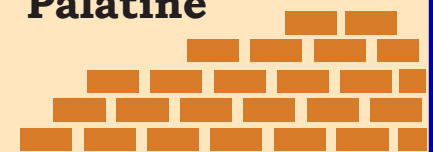


Rotary Club of Palatine

***Celebrating
50 years in the
community!***

**Join us and become
a part of
Rotary Plaza!**

**At the Northeast Corner of
Palatine and Plum Grove
Road in the
Heart of Downtown
Palatine**



***Get your brick today!
Be a part of Palatine for a lifetime!***

Dear Friend of Rotary,

In March of 2014, we are excited to announce the Rotary Club of Palatine will be celebrating 50 years of service to the community. In celebration of this milestone, the Rotary Club of Palatine has been busy planning Rotary Plaza. This new green space will be located in the heart of downtown Palatine at the Northeast corner of Plum Grove and Palatine Roads.

Rotary Plaza will be host to an electronic community sign board, Rotary benches, beautiful landscaping and personalized bricks from our many Friends of Rotary. Each brick will represent an individual, family, business or organization that proudly supports the work of Rotary and the Rotary Club of Palatine.

We hope you will join others in our community and show your support for Rotary Plaza by participating in the construction of Rotary Plaza. Please consider purchasing your brick to add to the foundation for the plaza.

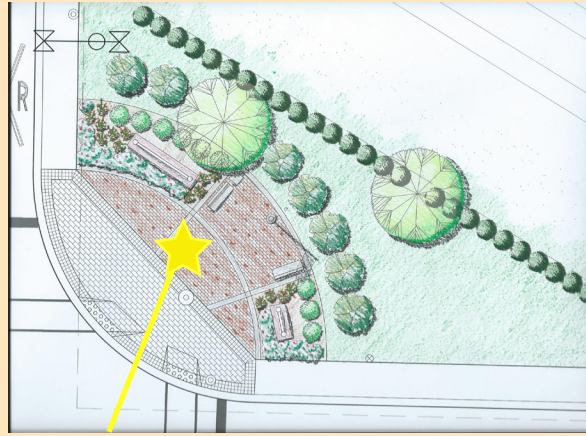
Should you have any questions or need any further information, please contact us at 50@palatinerotary.com.

In Rotary,
Liz Noe, Jacqueline Knight and
Ken Spengler
50th Anniversary Committee



www.PalatineRotary.com

Rendering of Rotary Plaza in March 2014:

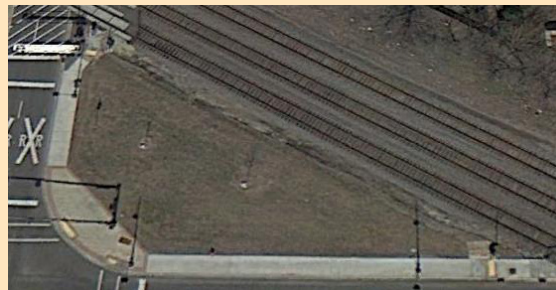


Your Brick Here

Rendering of the Community Electronic Sign to be Included at Rotary Plaza:



The Plaza Now:



Order Instructions:

1. Payment must accompany the order. Please use one form per paver.
2. Your entire message must fit within the spaces provided on each of the lines.
3. All text will be standard size, font and style. Message will be centered automatically and are subject to approval by the Rotary Club of Palatine.
4. Spaces between words count as characters.
5. Pavers will be placed on a 1st come/1st serve basis at the discretion of the Rotary Club of Palatine.

6. Paver orders will be gathered and added to Rotary Plaza in mid-2014. Initial placement by the March 2014 dedication can not be guaranteed.

Name _____

Address _____

City _____ St _____ Zip _____

Phone _____

E-Mail _____

Check Enclosed \$ _____

Payable to: Rotary Club of Palatine Foundation.
(Indicate PAVER in memo line)

Remit Order form to:
Rotary Plaza
PO Box 412
Palatine, IL 60078

(OVER)